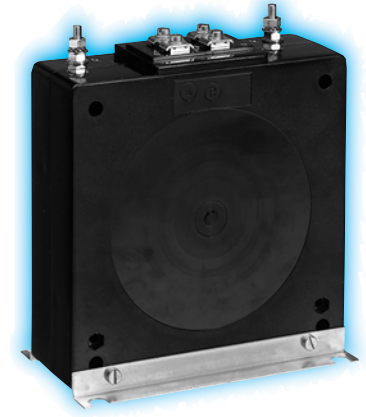
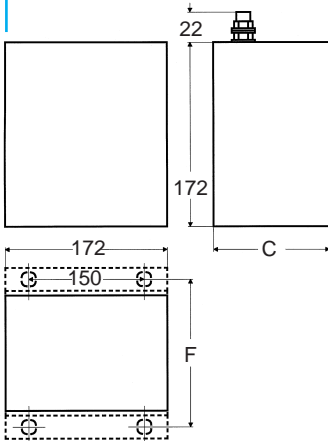


Type HP-..

Picture showing HP-2 with fixing brackets



<p>Wound primary protection ct with nickel plated brass bolt terminals</p>																		
<table border="1"> <thead> <tr> <th>Type</th> <th>Type no</th> <th>C</th> <th>F</th> </tr> </thead> <tbody> <tr> <td>HP-2</td> <td>502</td> <td>60</td> <td>85</td> </tr> <tr> <td>HP-3</td> <td>503</td> <td>90</td> <td>115</td> </tr> <tr> <td>HP-4</td> <td>504</td> <td>120</td> <td>145</td> </tr> </tbody> </table>	Type	Type no	C	F	HP-2	502	60	85	HP-3	503	90	115	HP-4	504	120	145		
Type	Type no	C	F															
HP-2	502	60	85															
HP-3	503	90	115															
HP-4	504	120	145															
<p>Primary wound protection transformers are manufactured in countless combinations. Specific measurement will be given in every individual case.</p>																		
<p><b>Accessories</b></p>	<p>fixing brackets secondary short circuiting piece sealable secondary terminal cover</p>	<p>FH S HG</p>																