

F

E

D

C

B

A

F

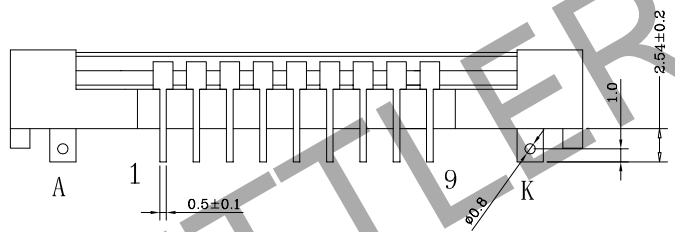
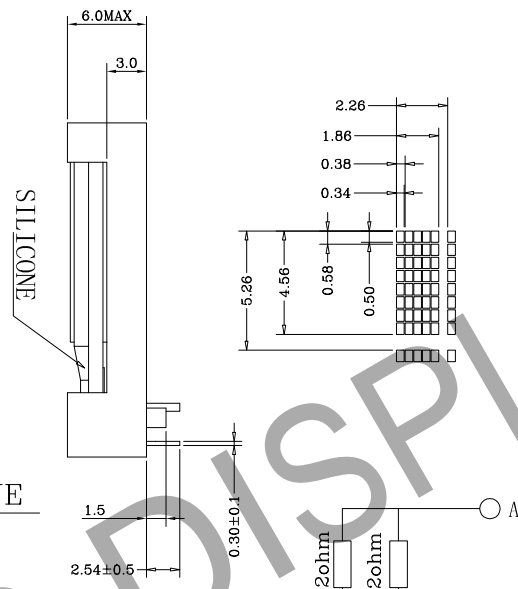
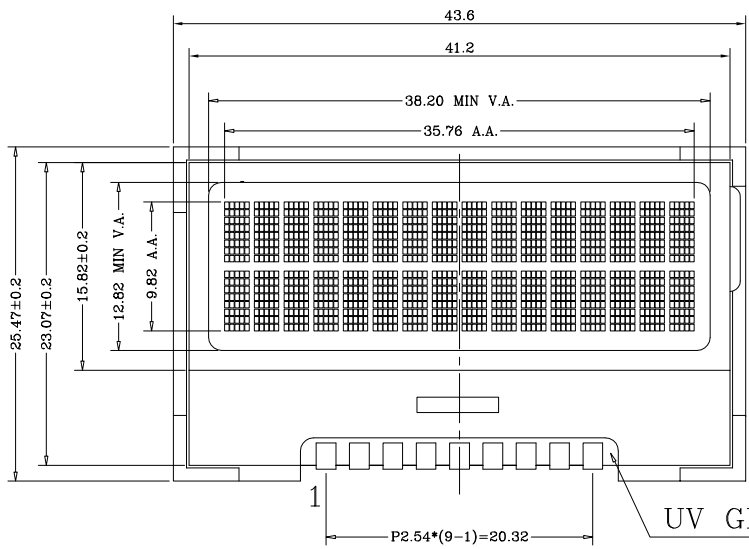
E

D

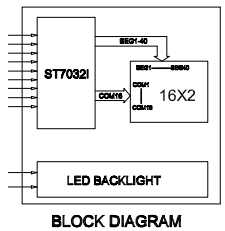
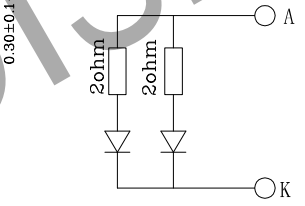
C

B

A



9	/RES
8	SCL
7	SDA
6	VSS
5	VDD
4	CAP1P
3	CAP1N
2	VOUT
1	VO
PIN NO.	SYMBOL



ITEM	SELECTABLE CONTENTS
DISPLAY MODE	STN YELLOW MODE
	STN GRAY MODE
	STN BLUE MODE
	FSTN
POLARIZER TYPE	REFLECTIVE
	TRANSFLECTIVE
	TRANSMISSIVE, POSITIVE
	TRANSMISSIVE, NEGATIVE
VIEWING DIRECTION	6 O'CLOCK
	12 O'CLOCK
LED BACKLIGHT	WHITE
	Y-G
	RED
	GREEN
	BLUE
	AMBER
	TRI-COLOR
TEMPERATURE RANGE	STANDARD TEMPERATURE
	WIDE TEMPERATURE
CHARACTER PATTERNS	
OPERATING VOLTAGE	3.3V
LCD DRIVING VOLTAGE	4.5V
LCD DRIVE METHOD	1/16 DUTY 1/5 BIAS
LCD DRIVE IC	ST7032I COG

THE PART NUMBER IN MASS PRODUCTION

- 1.Y-G STN,TRANSFLECTIVE LCD;Y-G BACKLIGHT;6 O'CLOCK;
- 2.Y-G STN,TRANSFLECTIVE LCD;WHITE BACKLIGHT;6 O'CLOCK;
- 3.--
- 4.--

UNIT MM	TOLERANCE X.X = ±0.2 X.XX = ±0.20 ANG = -
3RD ANGLE 	
SCALE: 1:1	
DRAWN:	
CHECKED:	
APPROVED:	

ZETTLER DISPLAYS

XIAMEN ZETTLER ELECTRONICS CO., LTD.

TITLE: LCM	
MODEL NO: AQM1602Y SERIES	REV A
PART NO:	SH NO 1/1